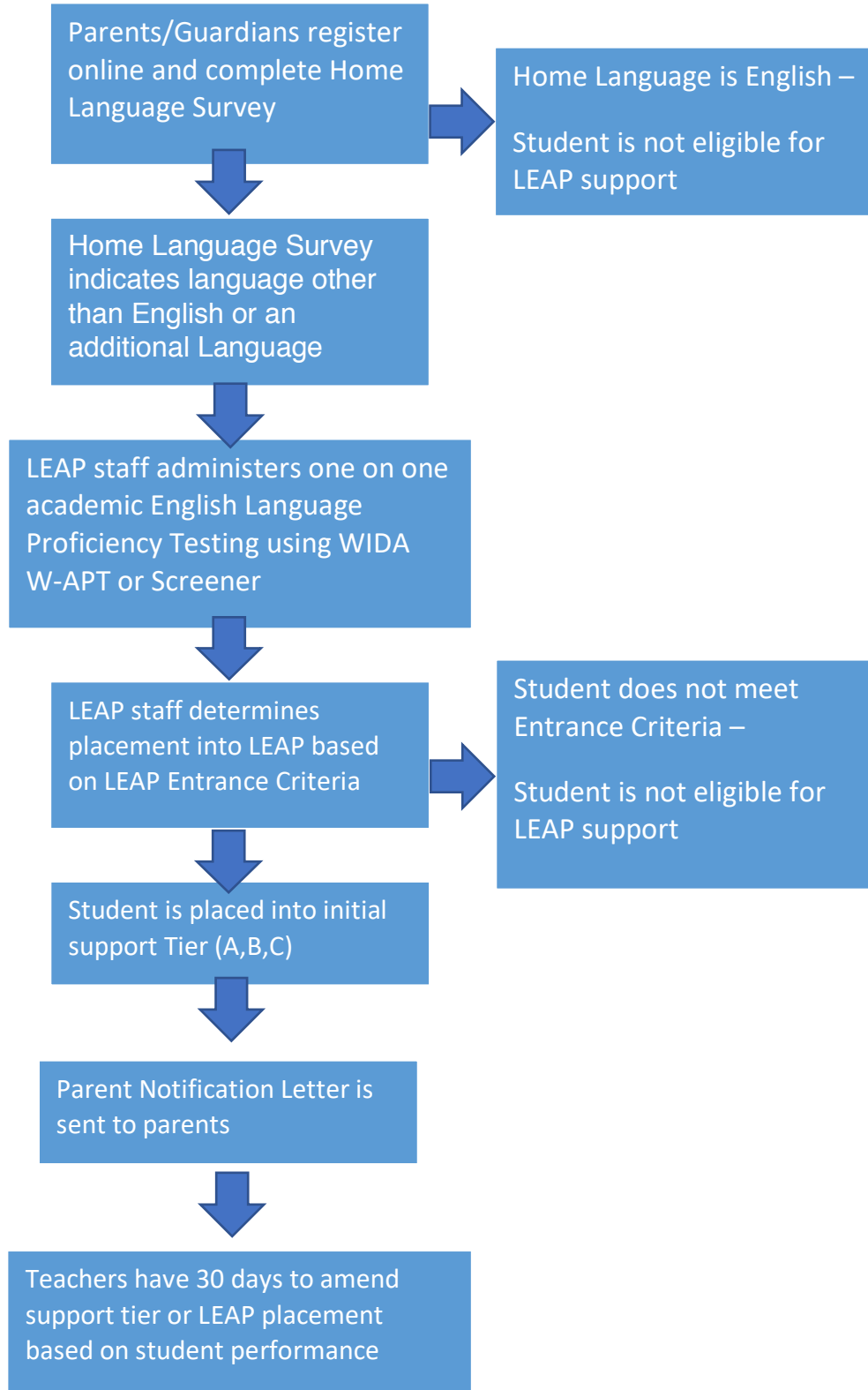


# LEAP Identification, Placement and Exiting

## Initial Academic English Language Learner (AELL) Student Identification Process



## LEAP Placement Criteria Chart

### Entrance Criteria

Grade	Language Assessment	Reading Assessment
<b>First Grade</b> (before Dec 1st)	<b>K W-APT</b> Student scores below: <ul style="list-style-type: none"> <li>• 19 (high) in Listening and Speaking or</li> <li>• 13 in Reading or</li> <li>• 15 in Writing</li> </ul> *First Grade (before December 1) K W-APT is reported in raw scores	Student scores below grade level as defined by the assessment: <ul style="list-style-type: none"> <li>• Fountas &amp; Pinnell</li> <li>• NWEA: MAP</li> </ul>
<b>Grades 1-5</b>	<b>W-APT or WIDA Screener</b> Student scores below 5.5 composite score or student scores below 4.5 on one or more domains (listening, speaking, reading, or writing).	<ul style="list-style-type: none"> <li>• Fountas &amp; Pinnell</li> <li>• NWEA: MAP</li> </ul>
<b>Grades 6-8</b>	<b>W-APT or WIDA Screener</b> Student scores below 5.5 composite score or student scores below 4.5 on one or more domains (listening, speaking, reading, or writing).	<ul style="list-style-type: none"> <li>• NWEA: MAP</li> </ul>

The composite level in addition to the data on specific modalities will be used to determine the appropriate level of service. School staff will also evaluate data such as evidence of past participation in LEAP programs, literacy assessment data using Fountas and Pinnell BAS, and classroom performance to determine level of service.

## LEAP Exit Criteria

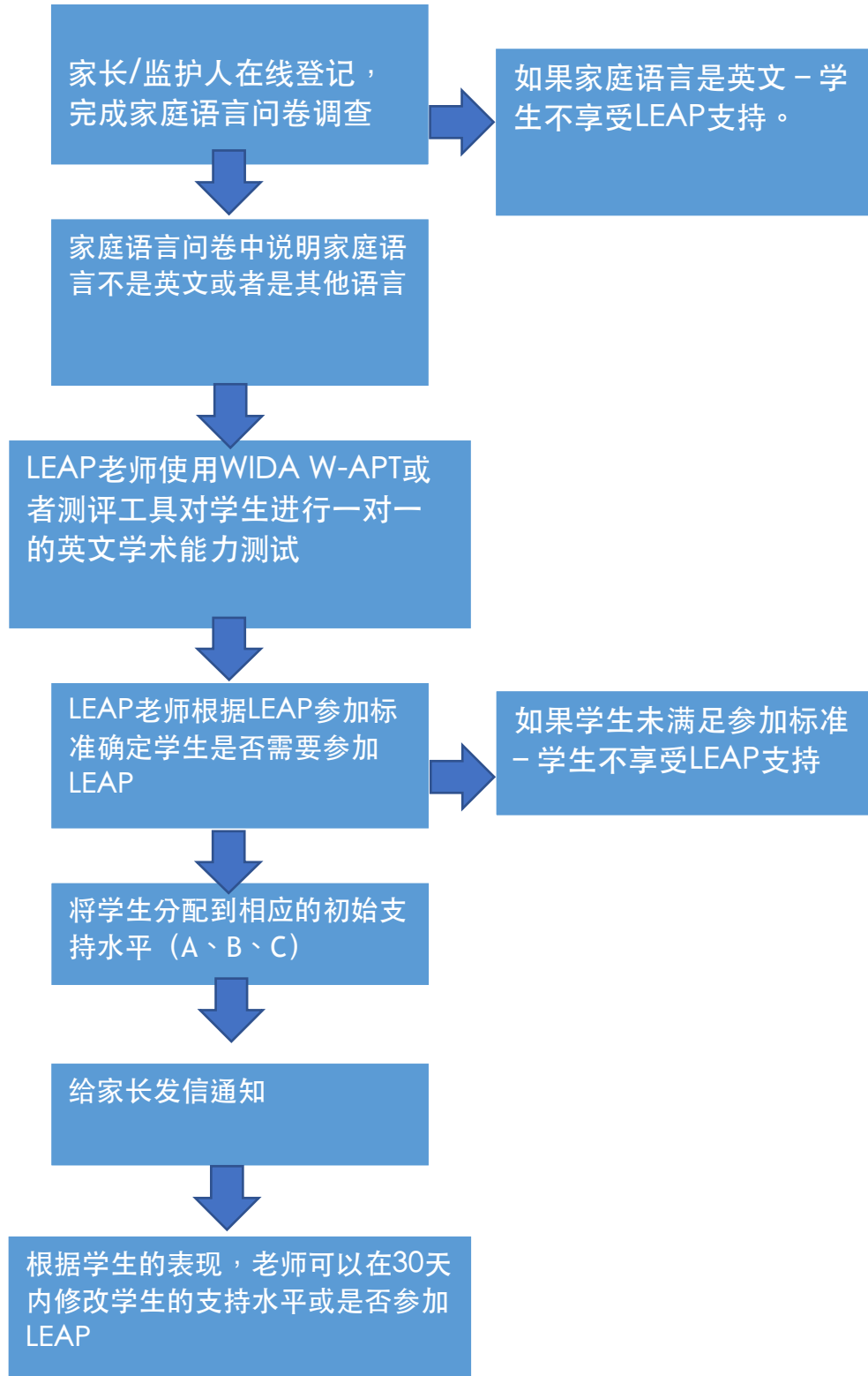
Grade	Language Assessment	Reading Assessment
Grades 1-5	<b>WIDA MODEL (summative)</b> Student scores a minimum composite score of 5.5 and a minimum literacy subscore of 5.0	Student scores below grade level as defined by the assessment: <ul style="list-style-type: none"> <li>• Fountas &amp; Pinnell</li> <li>• NWEA: MAP</li> </ul> Student is also able to demonstrate proficiency in other subject areas <ul style="list-style-type: none"> <li>• Determined by classroom observation and formative assessment</li> </ul>
Grades 6-8	<b>WIDA MODEL (summative)</b> Student scores a minimum composite score of 5.5 and a minimum literacy subscore of 5.0	<ul style="list-style-type: none"> <li>• NWEA: MAP</li> </ul> Student is also able to demonstrate proficiency in other subject areas <ul style="list-style-type: none"> <li>• Determined by classroom observation and formative assessment</li> </ul>

### Monitoring

Daystar Academy will monitor all fully English language proficient students for the first two school years the students are fully English proficient, after their exit from LEAP classification. Daystar will keep documentation (grade level, final English Language Proficiency composite score, at least two pieces of evidence, parental notification, and additional annual evidence of English language proficiency) on file throughout the two-year monitoring period.

## LEAP 的评定、参加和退出 最初的学术英语学习者

### 学生评定过程



## LEAP 评定标准表

### 参加标准

年级	语言测评	阅读测评
		根据测评，学生分数低于年级水平
<b>1 年级 (12 月 1 日之前)</b>	<b>K W-APT</b> 学生分数低于： <ul style="list-style-type: none"> <li>• 听说 19 分 (高)，或者</li> <li>• 阅读 13 分，或者</li> <li>• 写作 15 分</li> </ul> * 1 年级 (12 月 1 日之前) KW-APT 记录的是原始分数	<ul style="list-style-type: none"> <li>• Fountas &amp; Pinnell</li> <li>• NWEA: MAP 学业成长测评</li> </ul>
<b>1-5 年级</b>	<b>W-APT 或者 WIDA 测评工具</b> 学生的综合得分低于 5.5 分或者在任何一个或多个方面 (听、说、读、写) 的单项得分低于 4.5 分。	<ul style="list-style-type: none"> <li>• Fountas &amp; Pinnell</li> <li>• NWEA: MAP 学业成长测评</li> </ul>
<b>6-8 年级</b>	<b>W-APT 或者 WIDA 测评工具</b> 学生的综合得分低于 5.5 分或者在任何一个或多个方面 (听、说、读、写) 的单项得分低于 4.5 分。	<ul style="list-style-type: none"> <li>• NWEA: MAP 学业成长测评</li> </ul>

除了具体方面的数据之外，学校也将使用学生的综合水平来确定适合学生的服务。学校也会评估其他一些数据来确定适合学生的服务，比如过去参加 LEAP 项目的情况，使用 Fountas & Pinnell BAS 获取的读写能力数据，以及课堂表现等。

## 退出 LEAP 服务的标准



年级	语言测评	阅读测评
		根据测评，学生分数低于年级水平
1-5 年级	WIDA MODEL (总结性) 学生综合得分最少 5.5 分或者读写单项得分最少 5.0 分	<ul style="list-style-type: none"><li>• Fountas &amp; Pinnell</li><li>• NWEA: MAP 学业成长测评</li></ul> 学生在其他学科也能表现出熟练水平 <ul style="list-style-type: none"><li>• 根据课堂观察和形成性评估确定</li></ul>
6-8 年级	WIDA MODEL (总结性) 学生综合得分最少 5.5 分或者读写单项得分最少 5.0 分	<ul style="list-style-type: none"><li>• NWEA: MAP 学业成长测评</li></ul> 学生在其他学科也能表现出熟练水平 <ul style="list-style-type: none"><li>• 根据课堂观察和形成性评估确定</li></ul>

### 监测

当学生退出 LEAP 服务后，启明星将在之后的两个学年继续监控这些学生，确保他们的英文熟练。启明星会在这两年监测期间记录保存学生的信息（年级、最终的英语语言能力综合得分、至少两项证据、家长通知，以及每年其他的英语能力的证据）。